

原裝板/EGGER-木紋色



H1137 鐵刀
8/18/28/50mm



H3730 山核桃
8/18/28mm



H1145 原橡
8/25/50mm



H1150 灰橡木
8/18/28/50mm



H1151 棕橡木
8/18/28/50mm



H1199 碳黑橡木
8/18/28/50mm



H1277 相思木
8/18/28/50mm



H1295 胡桃木
8/18/28mm



H1487 北歐松木
8/18/28/50mm



H3012 梣木
8/18/28/50mm



H3078 白檀木
8/18/28/50mm



H3310 洗白橡木
8/18/28/50mm



H3778 加勒比核桃
8/18/28mm



H3450 白佛利特木
8/18/28/50mm



H3453 黑佛利特木
8/18/28/50mm



H3700 淺胡桃
8/18/28/50mm



W1000 雪白木紋
8/18/28/50mm

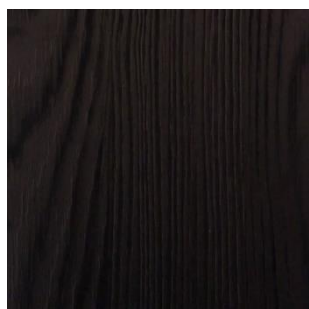


H3332 古典灰橡
8/18mm



H3331 布拉斯橡木
8/18/25mm

原裝板/EGGER-仿真色



U999 曜黑松木
8/18/25/28mm



H1486 藝術墨松
8/18/28/50mm



H1250 白樺木
8/18/28/50mm



H1212 棕色托西尼榆木
28mm



H1210 灰色托西尼榆木
28mm

原裝板/EGGER-花色



F311 鐵鏽
18mm



F310 銅鏽
18mm



F241 清水模
8/28/50mm



F638 銀灰清水模
8/18/28/50mm



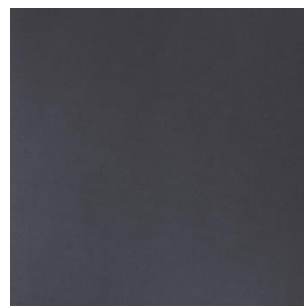
F425 亞麻米色
8/18mm



F900 奇木
8/18/28/50mm



F501 霧銀
8/18mm



F462 靛藍金屬
8/18/25mm



F755 紫羅蘭
18mm



F784 黃銅金屬
8/18/25mm

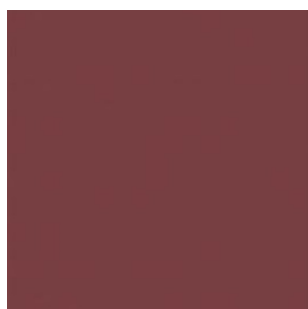


F257 銀河之星
18mm



F258 宇宙之星
18mm

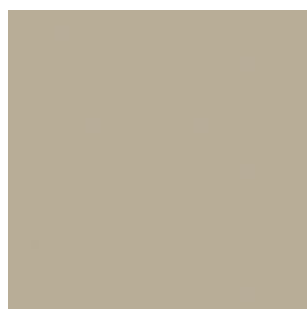
素色



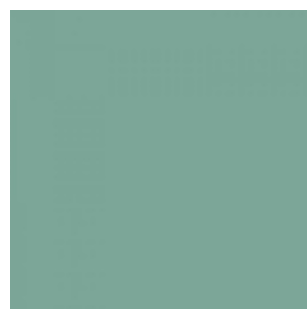
U343 酒紅
18mm



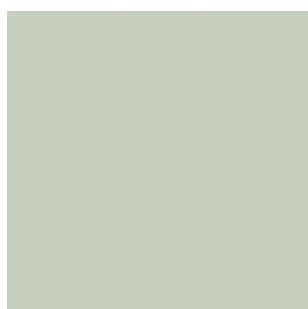
U732 灰色
8/18mm



U717 達喀爾灰
18mm



U636 海灣綠
18mm



U608 淺黃綠色
18mm



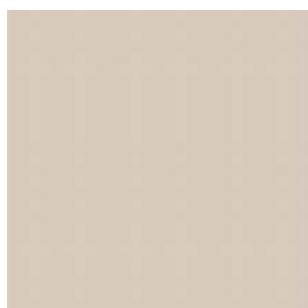
U540 牛仔藍
18mm



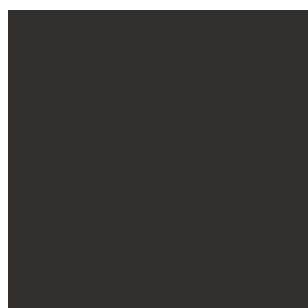
U420 紫色
18mm



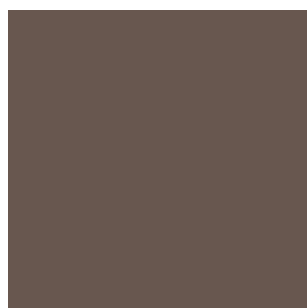
U660 亞馬遜綠
18mm



U702 米灰羊絨
8/18/25mm



U899 宇宙黑灰
18mm



U748 松露棕
18mm



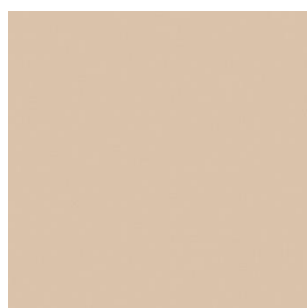
U727 石頭灰
18mm



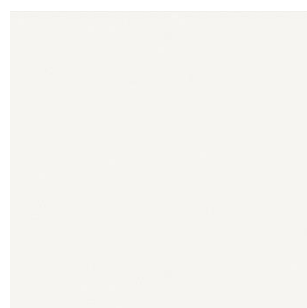
U626 奇異果綠
18mm



U504 提羅爾蘭
18mm



U155 淡駝色
18mm



W952 白色
8/18/25/50mm

進口台貼 E1 板-木紋



K1183 原橡
8/18/25mm



L3580G 挪威雪杉
8/18/25mm



L3576G 魁北克橡木洗白
8/18/25mm



L3555G 陳年櫟木
8/18/25mm



L1010G 懷古橡木黃
8/18/25mm



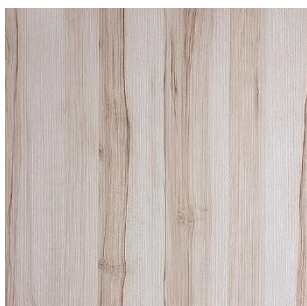
S372 北海道榆木
8/18/25/50mm



K2353 切爾克胡桃
8/18/25/50mm



K1053 夢幻黑栲
8/18/25/50mm



K6013 楓木
8/18/25/50mm



K5007 摩卡柚木
8/18/25/50mm



K1590 俄羅斯樺木
8/18/25/50mm



K1367 雅典秋香
8/18/25/50mm



K1051 維納斯白栲
8/18/25/50mm



J523 經典橡木
8/18/25/50mm



J521 瑞士榆木
8/18/25/50mm



J515 白岩川
8/18/25/50mm



J280 現代秋香
8/18/25/50mm



J185 冰島白橡
8/18/25/50mm



J513 印象淺胡桃
8/18/25/50mm

進口台貼 E1 板-花色



J356 清水模
8/18/25mm



L3920L 慕尼黑雲石
8/18/25mm



L3628L 卡拉拉白
8/18/25mm



L3926L 義大利洞石
8/18/25mm



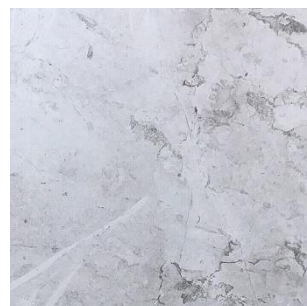
K2415 安藤清水模
8/18/25/50mm



K6359 黑雲石
8/18/25/50mm



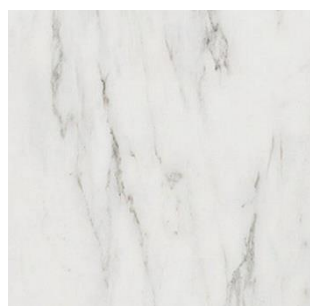
K6358 泥灰岩
8/18/25/50mm



K6357 白雲石
8/18/25/50mm



J543 卡瑪拉砂岩
8/18/25mm



J396 銀狐
8/18/25/50mm



K3410 雪白
8/18/25/50mm



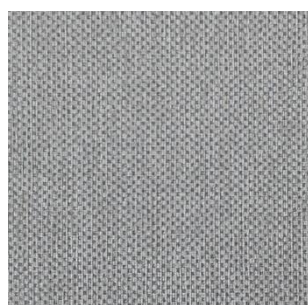
K3089 曉灰
8/18/25/50mm



H317 水藍
8/18mm



H322 尼羅河綠
8/18mm



K005H 牛津灰布
8/18/25/50mm

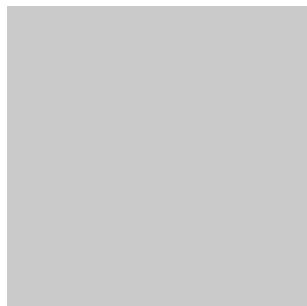
進口台貼 E1 板-素色



J218 天藍
8/18/25mm



J205 粉紅
8/18/25mm



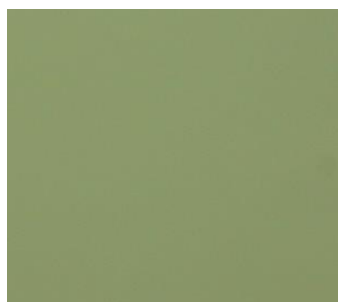
J202 淺灰
8/18/25mm

特殊門板系列

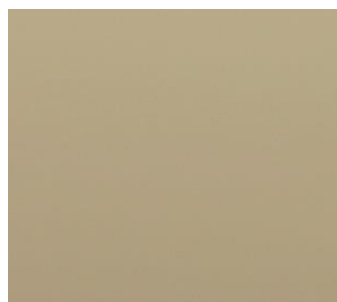
結晶板色號



AE105



AE106



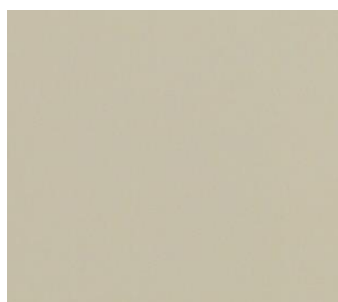
AE107



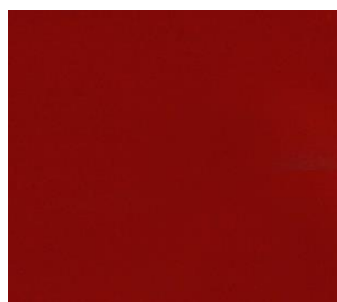
AE108



AE109



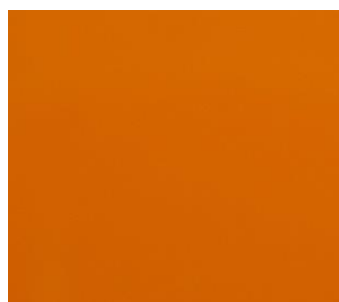
AE110



AE111



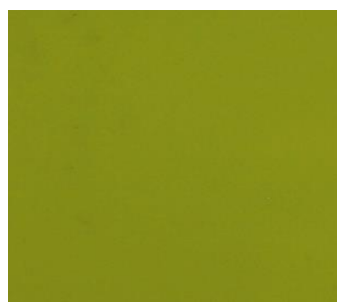
AE114



AE115



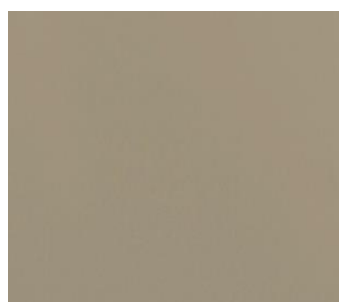
AE116



AE117



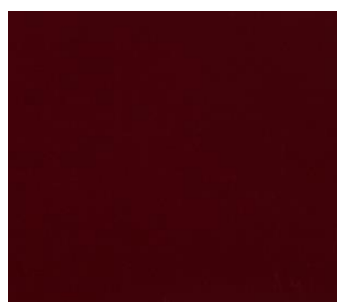
AE118



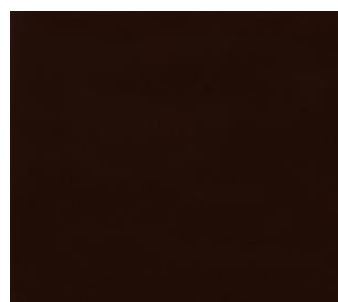
AE119



AE120



AE121



AE122

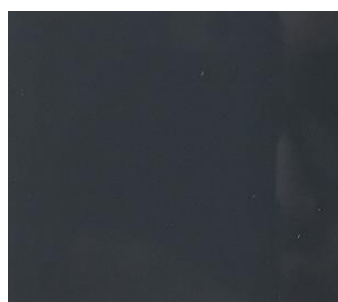
結晶板色號



AE124



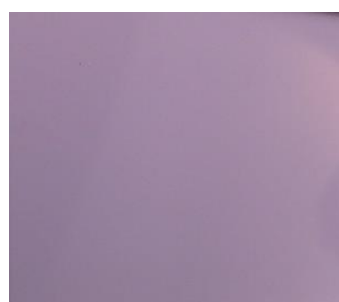
AE125



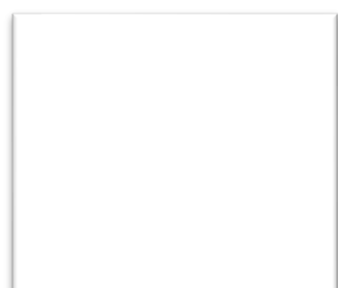
AE126



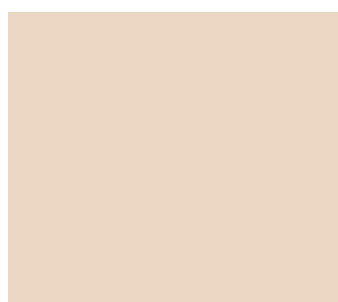
AE127



AE128



A101



A102



A103



A104



A105



A107



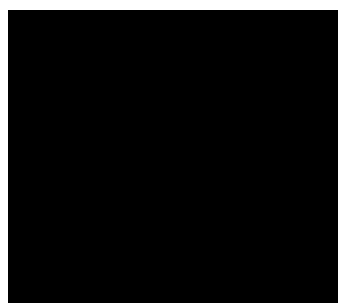
A108



A109



A110

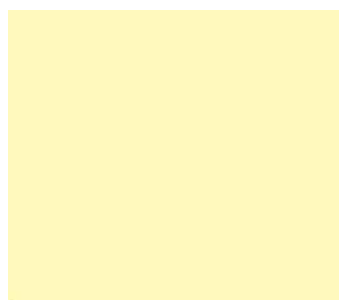


A112



A114

結晶板色號



A115



A117



A124



A125

水晶板色號



530-A



SD60



SD62



SD63



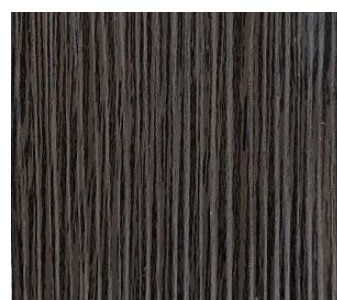
SD65



SD66



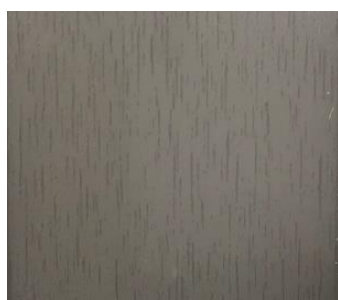
SD68



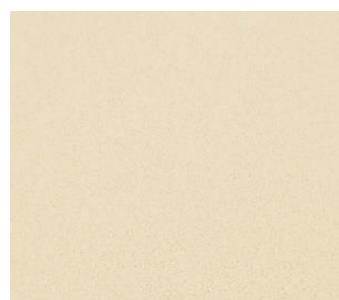
SD70



SD71



SD72

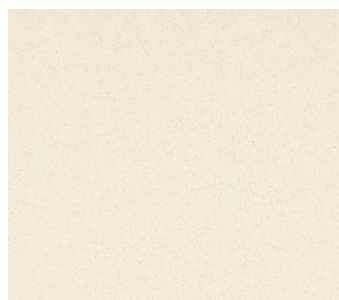


SD73

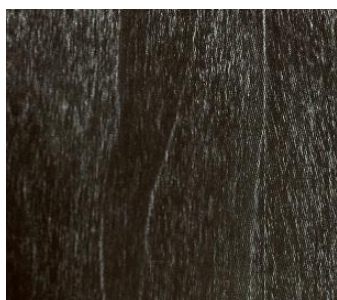


SD74

水晶板色號



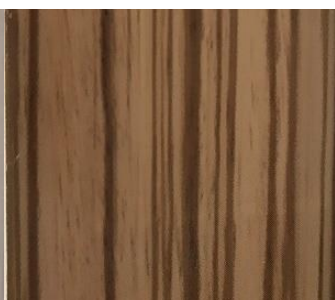
SD76



SD77



SD78



SD79



SD80



SD81



SD89



SD90



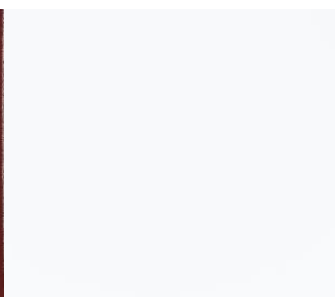
SD91



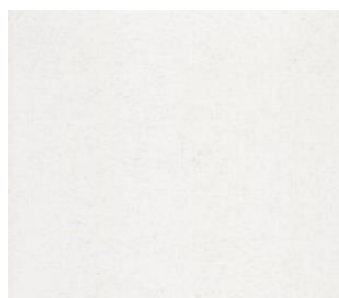
SD92



SD93



W501



W502



W514A



A515A



W523

水晶板色號



W528



W530A



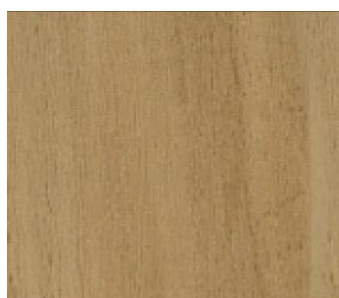
W532



W533



W534A



W534A1



W537A



W538



W539



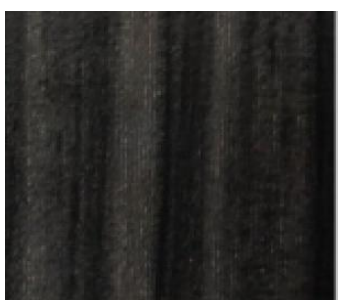
W540



W541



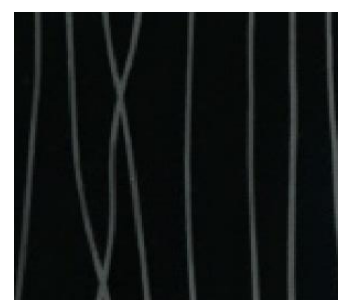
W542



W543



W556



W557



W581

鄉村風門板色號



017



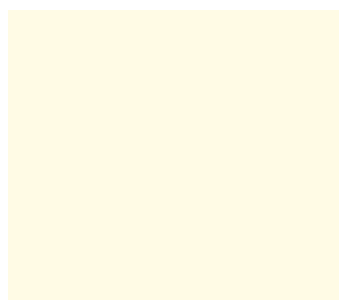
038



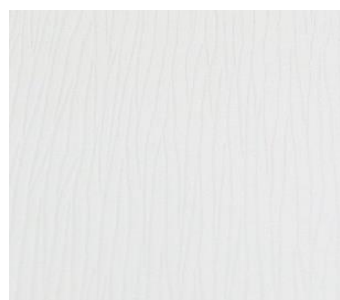
081



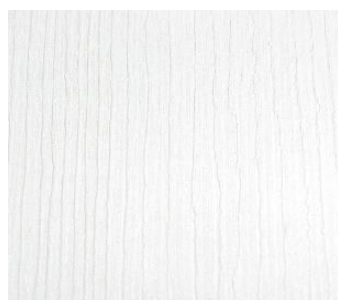
0595



601



4706



4713



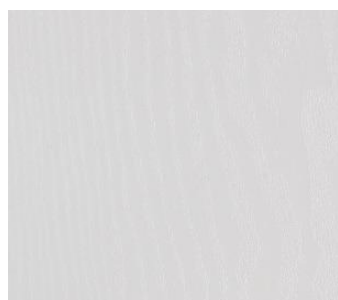
5712R



7781R



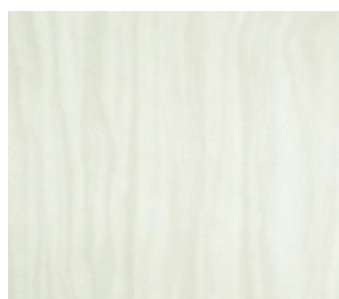
9013



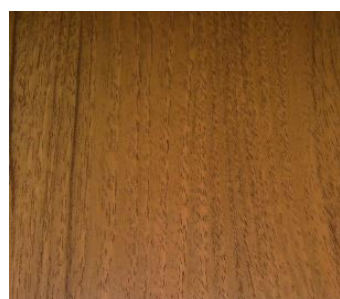
9717



41703



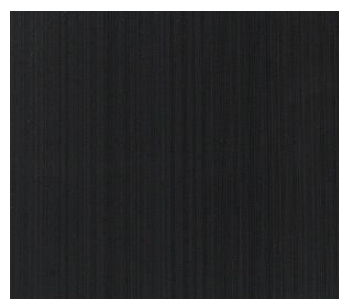
48504



49022



54008

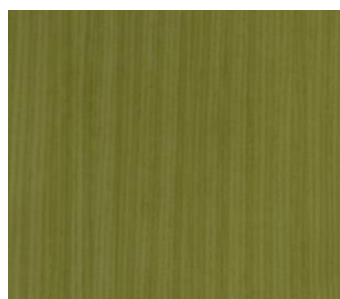


77907

鄉村風門板



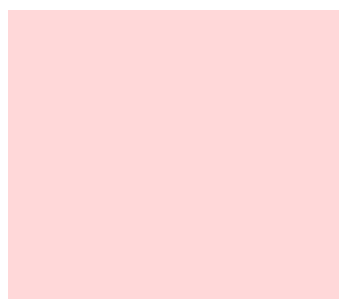
BG141



BG144



IHW852



RT0424



RT0425



RT0798



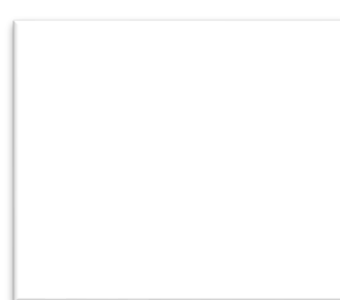
S74



S9922



S16803



S9724